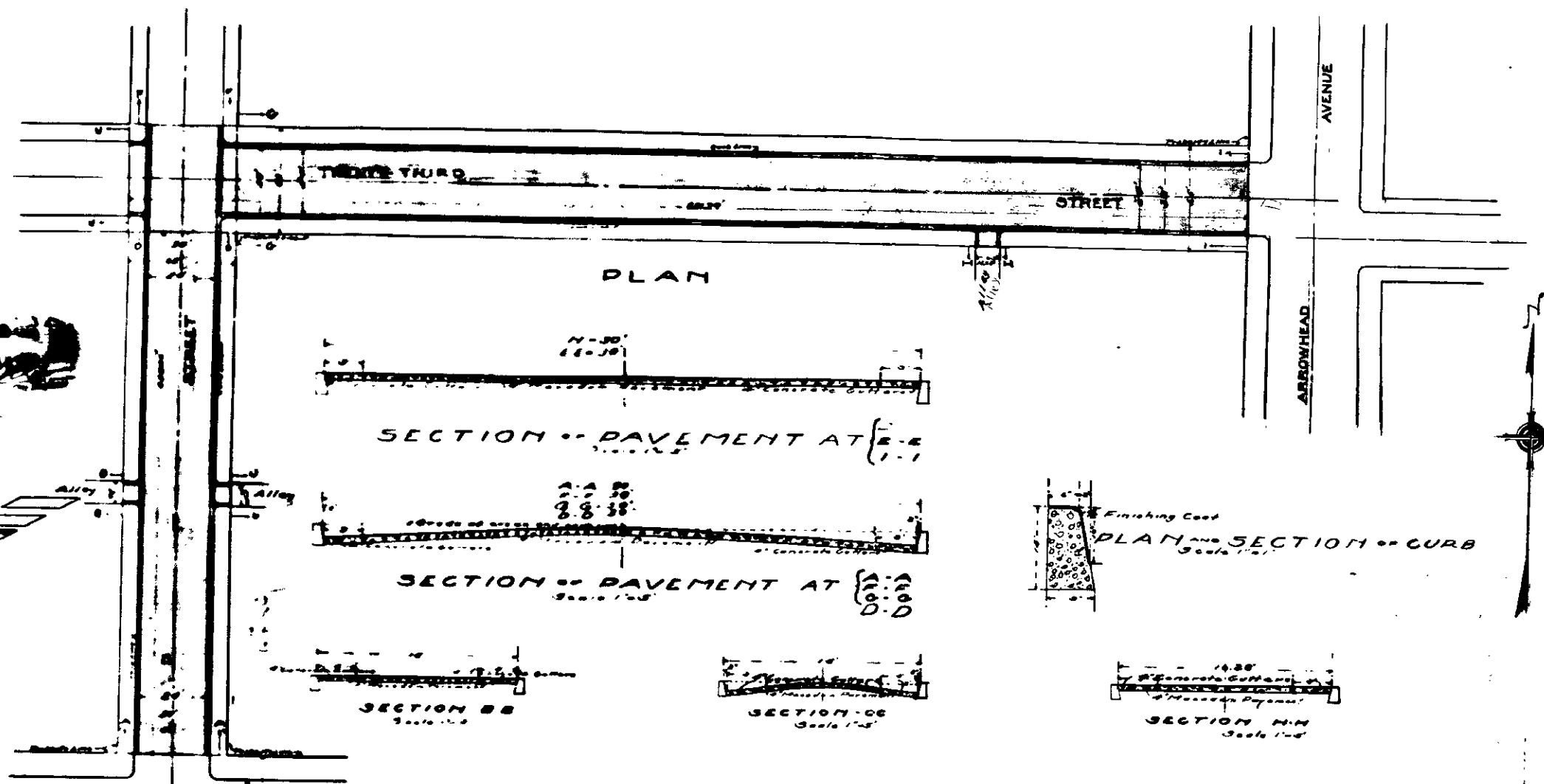


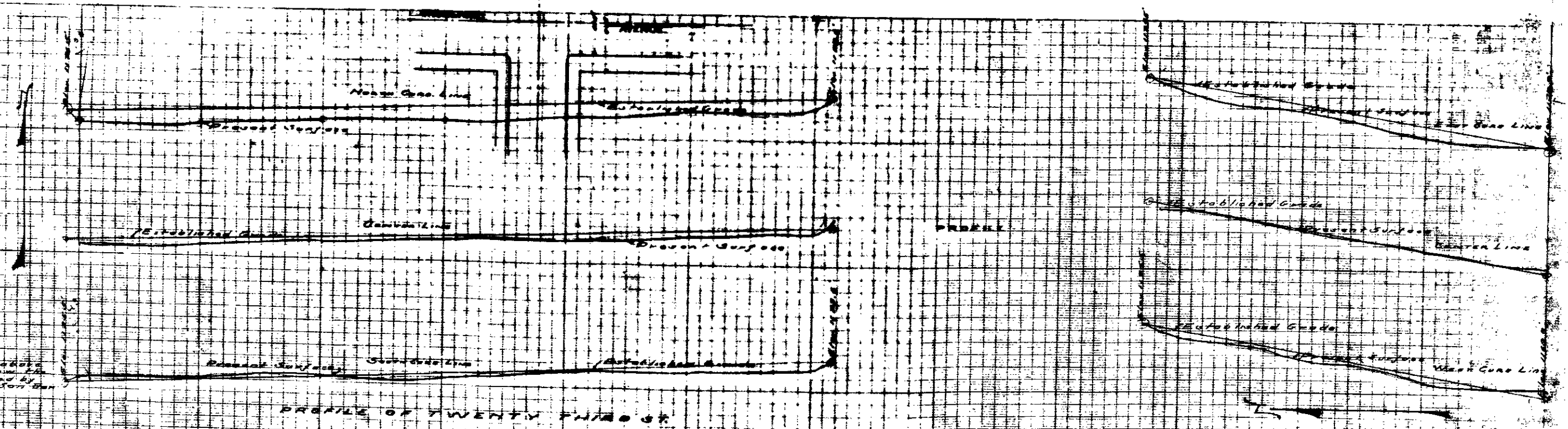
PLANN<sup>o</sup> 500  
 FOR THE IMPROVEMENT OF  
**TWENTY THIRD ST.**  
 FROM THE EAST LINE OF D ST. TO THE WEST LINE OF ARROWHEAD AVE.  
 AND  
**D STREET**  
 FROM THE NORTH LINE OF HIGHLAND AVE. TO THE NORTH LINE OF TWENTY THIRD ST.  
 CITY OF SAN BERNARDINO,  
 CALIFORNIA.

OCT. 21, 1928.

C.E. Johnson  
 CITY ENGINEER



**LEGEND**  
 1/2" inch means inch or inches  
 1'-0" means foot or feet  
 C means center line  
 E1 or means elevation  
 Concrete pavement to be constructed shown thus  
 Macadam pavement to be constructed shown thus  
 Concrete gutters in section shown thus  
 St means street  
 Center line of street shown thus

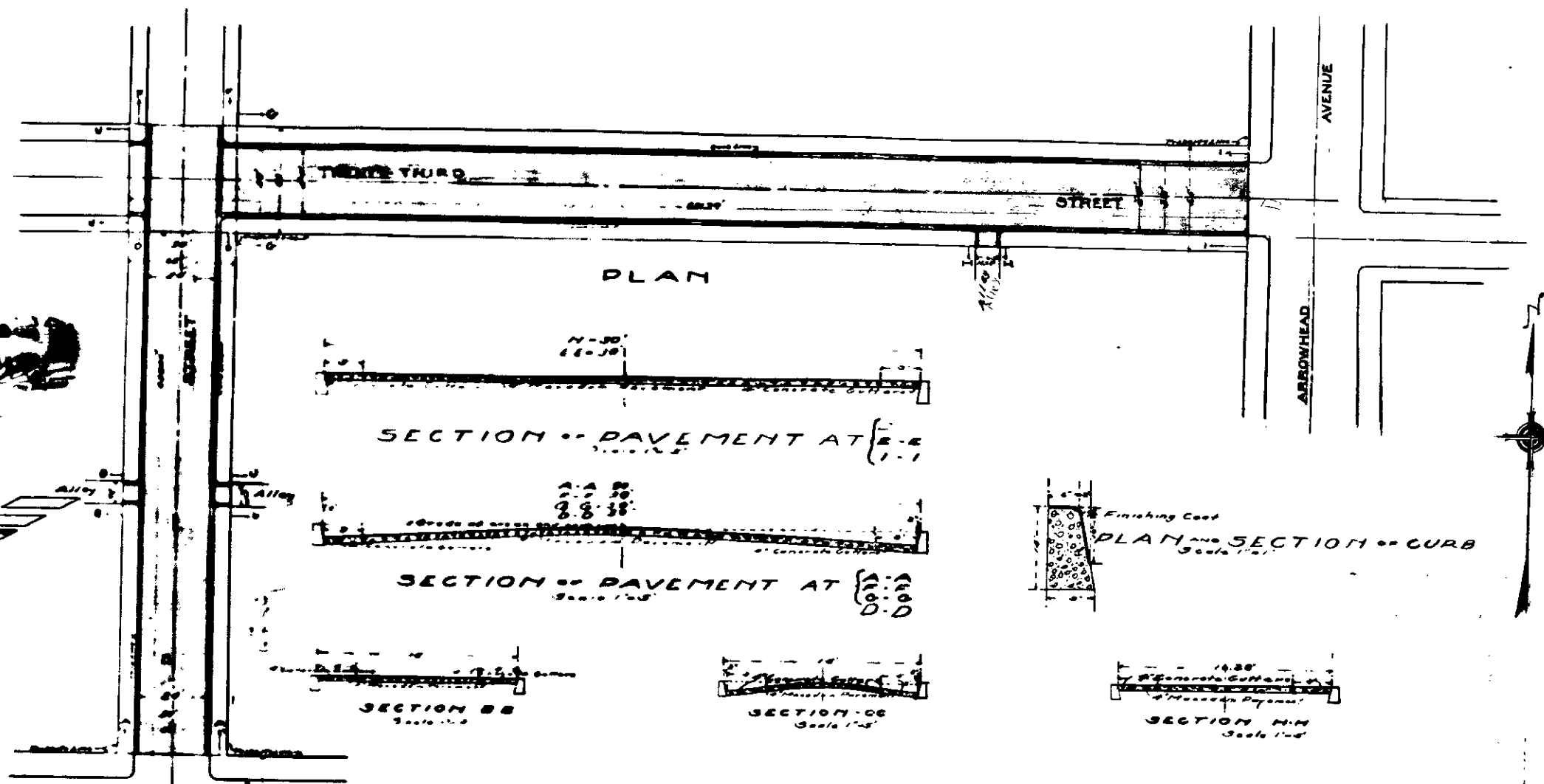


BLACK LINES SHOW PRESENT SURFACE  
 RED LINES AND FIGURES SHOW ESTABLISHED GRADE

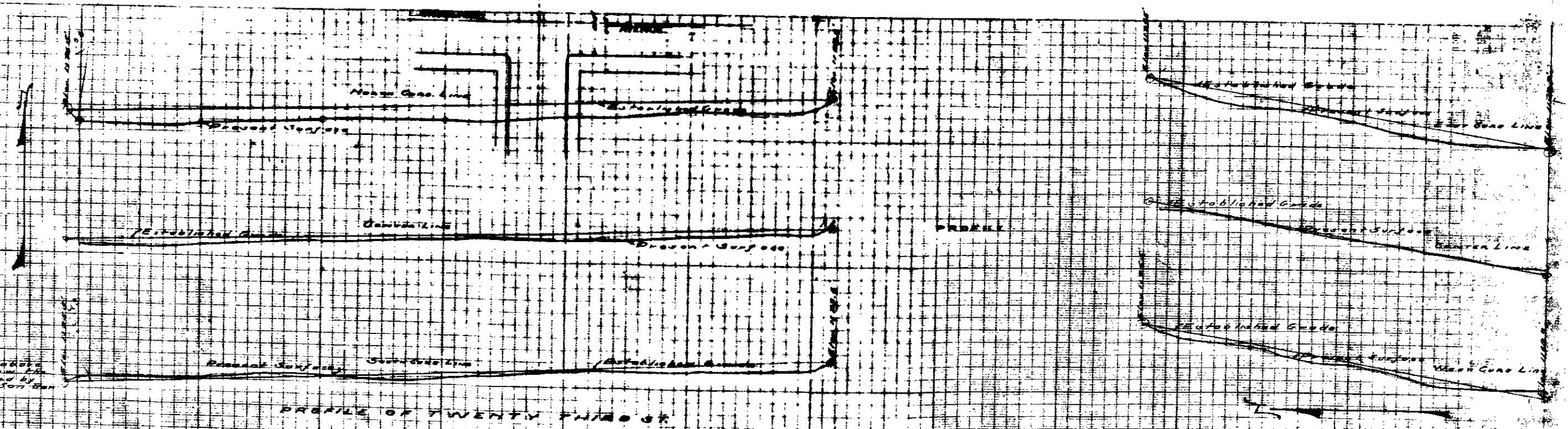
PLANN<sup>o</sup> 500  
 FOR THE IMPROVEMENT OF  
**TWENTY THIRD ST.**  
 FROM THE EAST LINE OF D ST. TO THE WEST LINE OF ARROWHEAD AVE.  
 AND  
**D STREET**  
 FROM THE NORTH LINE OF HIGHLAND AVE. TO THE NORTH LINE OF TWENTY THIRD ST.  
 CITY OF SAN BERNARDINO,  
 CALIFORNIA.

OCT. 21, 1928.

C.E. Johnson  
 CITY ENGINEER



**LEGEND**  
 1/2" inch means inch or inches  
 1'-0" means foot or feet  
 C means center line  
 E1 or means elevation  
 Concrete pavement to be constructed shown thus  
 Macadam pavement to be constructed shown thus  
 Concrete gutters in section shown thus  
 St means street  
 Center line of street shown thus



BLACK LINES SHOW PRESENT SURFACE  
 RED LINES AND FIGURES SHOW ESTABLISHED GRADE